

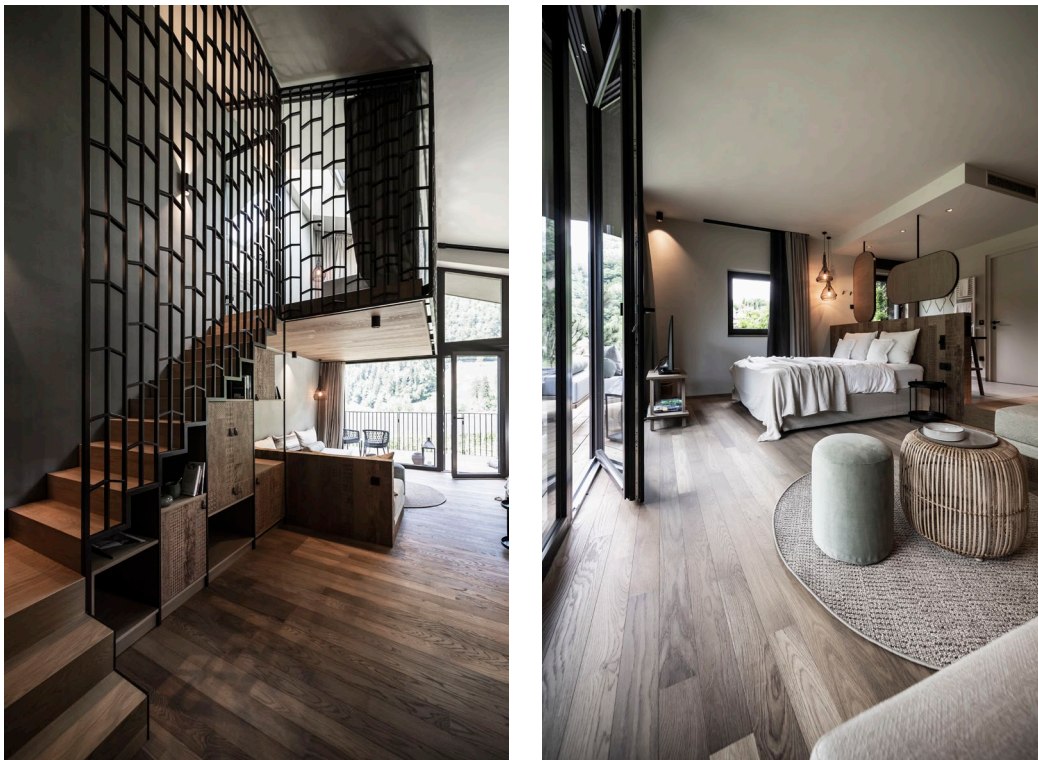
# BAUWERK®

## Parquet

### Press Release

### A Blissful Break Close to Nature

**At Torgglerhof “Apfelhotel” in South Tyrol, modern design meets high-quality natural materials, such as authentic wood parquet by Bauwerk.**



*Nestled among the apple orchards, meadows, and mountains of Passeiertal, South Tyrol, lies Torgglerhof Apfelhotel, which has seen extensive renovations and expansions, turning it into a place to spend delightful holidays. With this project, a young generation of hoteliers sought to turn a fantastic location steeped in history into a special kind of holiday haven. Together with an architect and design firm from Bozen, noa\* - network of architecture, they have created a hotel that is close to nature and boasts food and wellness facilities that pamper the guests and stimulate their senses.*

Successive renovations and expansions to the original structures have taken place over the past few years, with a great deal of charm and attention to detail. According to one of the architectural firm's founders,

---

Bauwerk Group Schweiz AG  
Neudorfstrasse 49, CH-9430 St. Margrethen  
T +41 (0)71 747 74 74, F +41 (0)71 747 74 75



info@bauwerk.com, www.bauwerk-parkett.com

# BAUWERK®

## Parquet

Lukas Rungger, this project followed the motto of "telling stories rather than designing buildings". "Special people seek special stories that they can retell. We help them to find these stories, to celebrate and to explore them," Rungger added. The Apfelhotel is one of these special stories made into a building.



Back in 2014, noa\* won a tender for expanding an existing hotel structure that was to take place in multiple phases. In 2016, the old barn that stood next to the original main building housing a restaurant was cleared and repurposed. The so-called 'apple sauna' was created at the same time. The Garden Suites, three new detached buildings with 18 guest rooms were built in the eastern part of the compound in 2020. The Brunnenhaus wellness area was also opened, which is located under a hill, making it part of the landscape. For the designers, it was critical that these interventions did not take away the character of the original building complex, making sure that its proportions remained the same. In the new buildings, noa\* also used the traditional architectural language of the surrounding area, and reinterpreted it, which resulted in unconventional wooden facade designs.

### **A wellness retreat among apple trees**

Nature plays a vital role inside the spacious Garden suites and lofts. Large amounts of wood, natural textiles and earthy tones define the cohesive interior design in these spaces. The Bauwerk parquet installed there is

---

Bauwerk Group Schweiz AG

Neudorfstrasse 49, CH-9430 St. Margrethen

T +41 (0)71 747 74 74, F +41 (0)71 747 74 75



info@bauwerk.com, www.bauwerk-parkett.com

# BAUWERK®

## *Parquet*

a perfect match. "Right from the start, we knew that we had to have real wooden floors", explained Maria Pichler, the young owner of the hotel. "Parquet brings value, it creates the right mood and gives our guests a sense of nature and wellness with every step they take." The noa\* architects also highlighted that, "Parquet by Bauwerk creates an unparalleled sensation of warmth in the rooms."

### **Nature at every turn**

The hotel is fitted out with Villapark and Cleverpark parquets, both in slightly smoked oak wood type and colour Crema, with a lively grading and longitudinal bevels. "Thanks to its colour features, the floor design is in harmony with the rest of the interiors," the noa\* architects said. "The parquet has a very natural look, with visible wood grain. It looks elegant without being rustic."

### **Innovative solutions for special spaces**

A total of some 850 square metres of Bauwerk parquet was laid in the Garden Suites at the Apfelhotel. In some of the suites, the high space under the open gable offers a cosy sleeping gallery. The gallery is accessible through an indoor staircase, also offering space and shelves for storage. As further proof of the exquisite craftsmanship and quality of Bauwerk's woodwork, the steps and landings of the staircase are made from the same wood as the parquet itself, with an identical colour, surface treatment and level of gloss.

### **Top-notch manufacture and installation**

Villapark and Cleverpark parquets are made with top precision at Bauwerk's main facility in St. Margrethen. Villapark captivates with its magnificent 1-strip-plank format featuring planks that are over two metres long. Independent testing institutes have shown that Bauwerk's solutions are perfectly and demonstrably healthy for living. The B-Protect® lacquer used for the project protects the natural beauty and matte look of the wooden floor, also making it very easy to maintain.

Simonazzi, an experienced family business from South Tyrol, handled the professional installation of the Bauwerk parquet. The project manager in charge, Roland Steinmair, noted: "We've been working with Bauwerk's parquet for many years now, and we are always impressed at how smoothly the installation of these floors goes. The perfect fit and precise finish of the planks are unique to the market. We are happy to recommend Bauwerk to architects and property owners, including the Pichler family from the Apfelhotel. And in the next construction phase, which is currently being planned, we will use parquet by Bauwerk."

---

Bauwerk Group Schweiz AG

Neudorfstrasse 49, CH-9430 St. Margrethen

T +41 (0)71 747 74 74, F +41 (0)71 747 74 75



info@bauwerk.com, www.bauwerk-parkett.com

# BAUWERK®

## *Parquet*

### **Details + Facts**

Property and its owner: Torgglerhof Apfelhotel, Pichler family,

Saltaus (St. Martin in Passeier, IT), [www.apfelhotel.com](http://www.apfelhotel.com)

Architecture and interior design: noa\* - network of architecture, Bozen (IT), [www.noa.network](http://www.noa.network)

Completion of the Garden Suites: 2020

Floor installer: Simonazzi GmbH, Völs am Schlern (IT), [www.simonazzi.bz.it](http://www.simonazzi.bz.it)

Parquet: Villapark and Cleverpark slightly smoked Oak Crema, by Bauwerk Parkett

Photos: Alex Filz, [www.alexfilz.com](http://www.alexfilz.com)

---

Bauwerk Group Schweiz AG

Neudorfstrasse 49, CH-9430 St. Margrethen

T +41 (0)71 747 74 74, F +41 (0)71 747 74 75



[info@bauwerk.com](mailto:info@bauwerk.com), [www.bauwerk-parkett.com](http://www.bauwerk-parkett.com)